

BSL NEW ENERGY TECHNOLOGY CO., LTD

www.lithiumforkliftbattery.com

Call: +86-752-2819-469

E-mail: inquiry@bsl-battery.com

Address: Building 1 Zhongkai Innovative Base -No.2 Huifeng 6th Road Zhongkai Hitech Zone, Huizhou City

BSL NEW ENERGY(USA) TECHNOLOGY CO,LTD

bslbattery.us

Call:+1(571)412-2485

E-mail: sales@bslbattery.us

Address: 7901 4th St N Ste 300, st Petersburg, fl.us 33702



Facebook



Linkedin



Tiktok



Instagram



Youtube



THE PROVEN LEADER IN LITHIUM-ION MOTIVE POWER BATTERY



www.lithiumforkliftbattery.com

©2024 BSLBATT. All rights reserved BSLBATT. ISO and UL are property of the international organization for Standardization and Underwriters Laboratories respectively. Subject to revisions without prior notice.E.&O.E.





The POWER Behind the Forklift

“

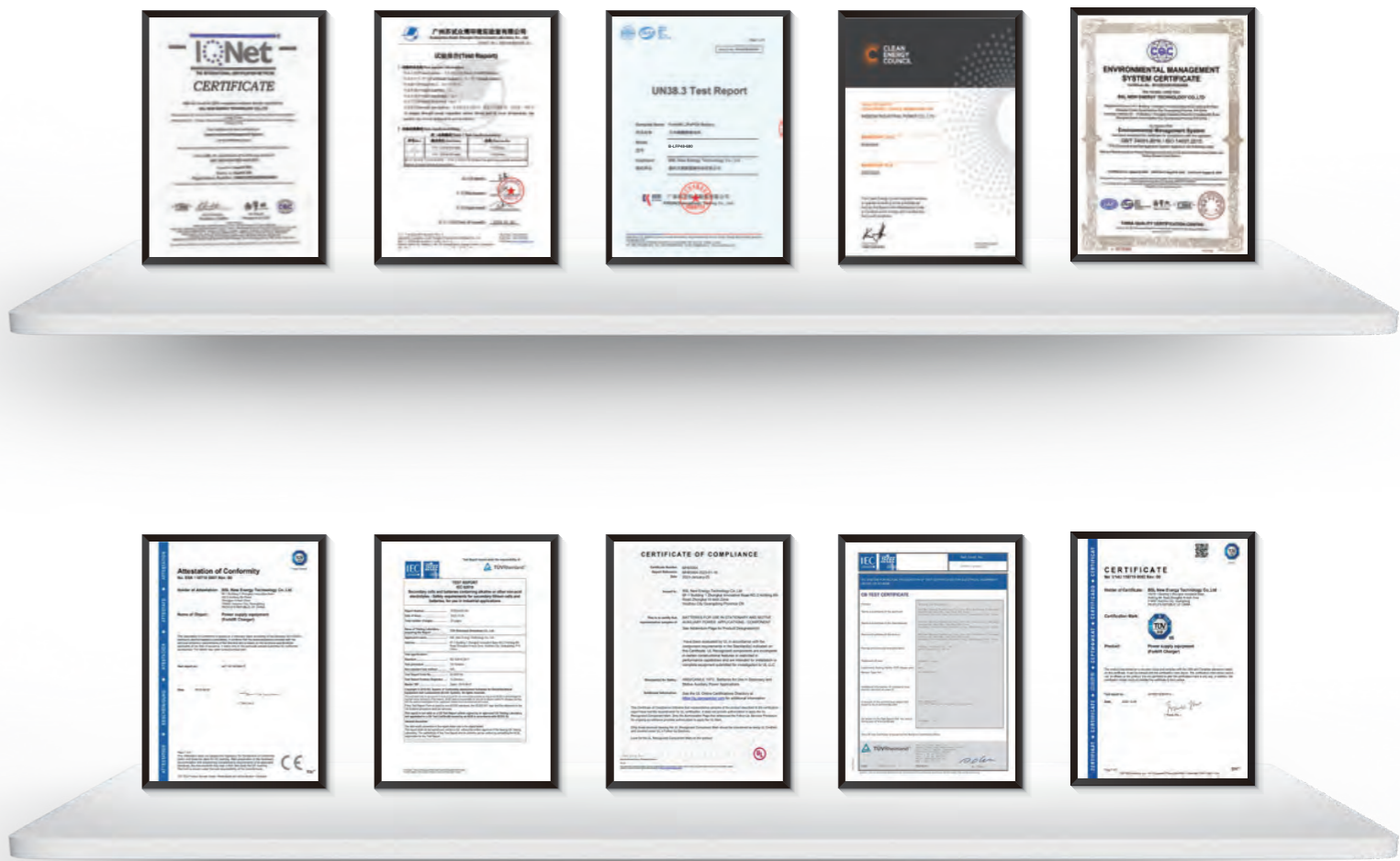
Founded in 2012, BSLBATT is an innovative high-tech company that designs and manufactures smart lithium-ion batteries (up to 50% more efficient than similar products on the market) for industrial forklifts used in the warehousing and distribution industry. BSLBATT offers a range of high-quality lithium-ion battery packs with UL2580, IEC62619, CE and UN38.3 certifications, including proprietary.

Battery Management System (BMS) and cloud platform technologies, providing customers with better performance, lower cost of ownership and greener solutions than traditional lead-acid and propane batteries in many usage scenarios. Lithium-ion battery packs reduce CO2 emissions and help improve fleet sustainability and ESG metrics.



- 2011**
 - WISDOM INDUSTRIAL POWER CO., LIMITED
 - Now known as BSL NEW ENERGY (HONGKONG) CO., LIMITED
- 2012**
 - HUIZHOU WISDOM POWER TECHNOLOGY CO.,LTD
- 2014**
 - Start lithium Battery forklift Lithium battery Factory(bslbatt)-water cells
 - Factory in ANHUI province
- 2017**
 - The lithium ess division is quickly developing.
- 2018**
 - The Lithium Motive Division Is Quickly Developing.
 - The first generation module is explored and dferred to customer (ESS & MOTIVE)
- 2020**
 - The second generation module is explored.
 - Oil-based batteries are being used in industrial vehicles and forklifts.
- 2021**
 - HUIZHOU BSL NEW ENERGY COMPANY CO., LTD
 - Motive division Different Cell's technology From wisdom
- 2022**
 - 2,000 square meters of office and warehouse in Dallas, Texas, USA
 - Dongguan Qingxi Town opened a 4,000 square meters energy storage factory
 - Products became the first domestic UL2580 certification and IEC62619 UL1973 certification
- 2023**
 - Opened European office and warehouse.
 - Established a manufacturing base in Mexico City.

Certification



Insurance

The BSLBATT product is insured by PICC, which offers global service to our customer.
 The people's insurance company of China limited, known as PICC group or just PICC, is a Chinese listed insurer.





PALLET TRUCKS



NARROW AISLE FORKLIFTS



END RIDER




RIDE ON FORKLIFTS



AIRPORT GROUND SUPPORT EQUIPMENT

 **12+**
Years Lithium Experience


12000
Lithium Batteries Deployed Worldwide


50+
Self-developed Patents


UL2580
The First Company In China To Obtain Certification

2 
GWH+
Delivered Capacity


**Large supermarket
cold storage**
Preferred China Forklift Lithium Battery Supplier

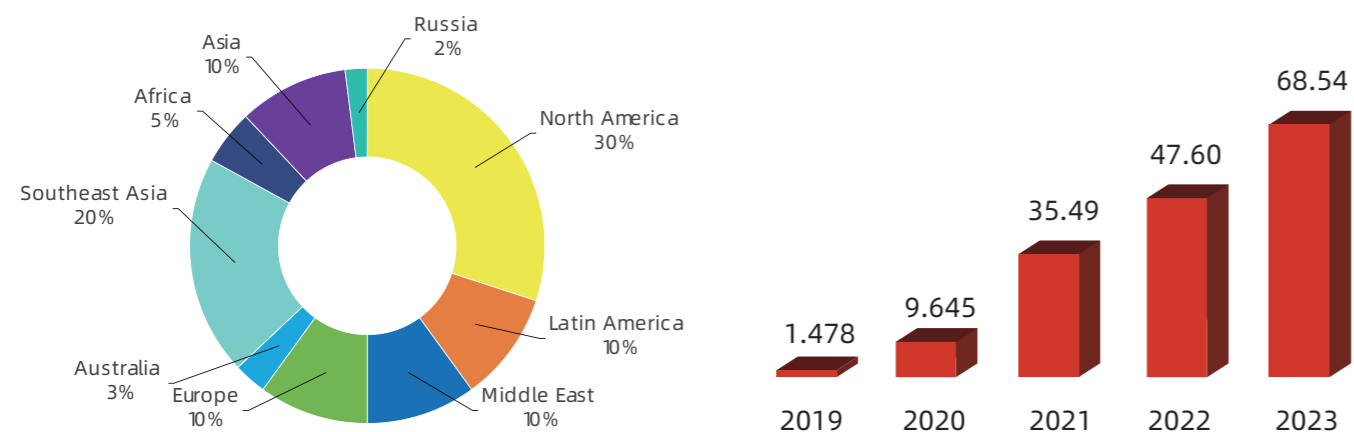
Top **5** 
China Forklift Lithium Battery Supplier

60+ 
Countries
Global Deliveries


6.2%
Continuous R&D Investment

\$68.54 million

► BSLBATT 2023 Sales Revenue



Overseas sales account for **90%** BSLBATT sales revenue.



Quality High-quality Products and Automation Production Lines

Vertically Integrated Production Process

| | |
|-----------------|---------------|
| Product quality | Delivery time |
| Control | |
| Technology | Cost |

Worldwide Certifications

3 Professional Labs

1 Certificated of **CNAS**

► **2** overseas branches and **54** dealers around the world, promoting the BSLBATT brand and providing after-sales services.



Suitable For All Top Brand Electric Forklift Models



Capitalize on Your Investment

BSLBATT batteries will transform your business, maximize the efficiency of your operation by eliminating the complexity of lead acid battery management, and take advantage of the most advanced battery technology available.

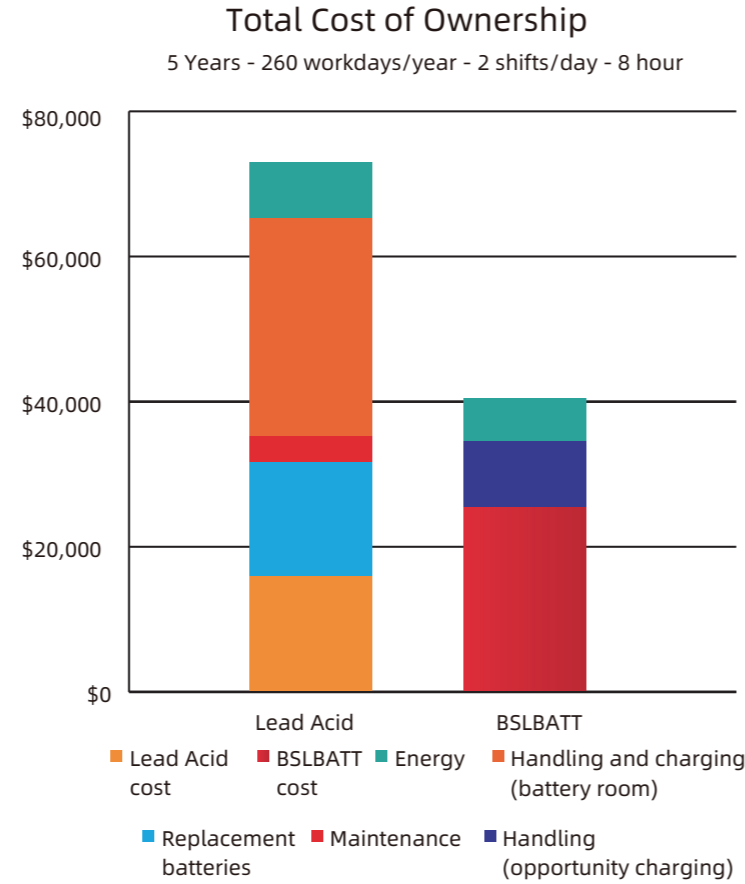
Drop-in Replacement

Maintenance Free

Eliminate Lead Acid Infrastructure

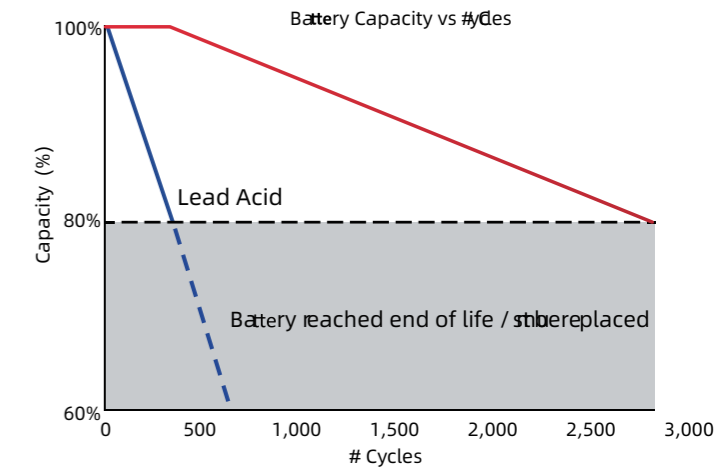
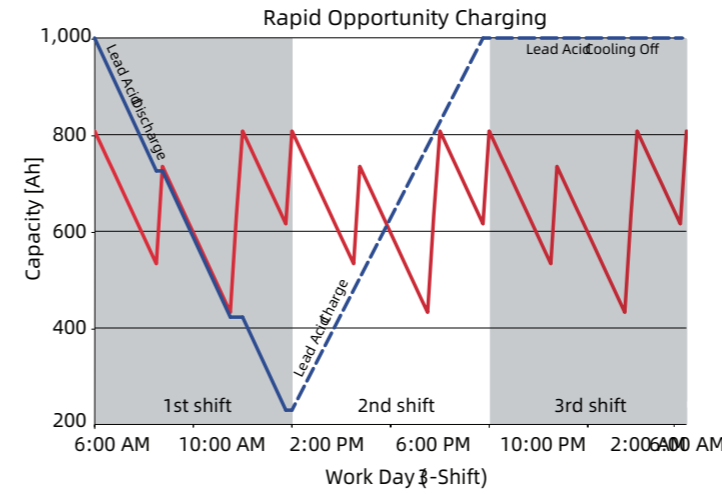
Increased Productivity

Warranty



Performance

When compared with conventional lead acid batteries, BSLBATT delivers unmatched performance and capabilities. BSLBATT batteries will increase your forklift uptime and overall efficiency.



Quick Comparison Table

| PARAMETER | LEAD-ACID BATTERIES | LITHIUM-ION BATTERIES |
|--------------------------------|--|--|
| No. of shifts with one battery | 1 | Up-to 3 |
| Charging time | 8 hours | 2-3 hours |
| Opportunity charging | Possible, however battery life reduces drastically | Charging for as low as 5-10 minutes whenever possible |
| Safety & Health Risks | High | Low |
| Watering the battery | Yes | N/A |
| Maintenance Cost | High | Low |
| Battery LifeSpan | ~ 1500 cycles | 3500 cycles |
| Electrical Infrastructure | Use existing | May need Upgrade |
| Replacement cost | High | Low |
| Energy Efficiency | Low | High |
| Electricity Cost | High | lower Save up to 30% because of high energy efficiency |
| Upfront Cost | Low | High |
| Total Cost of Ownership | High | Low |
| Environment Friendly | No | Yes |

Advantages of Lithium-ion Technology

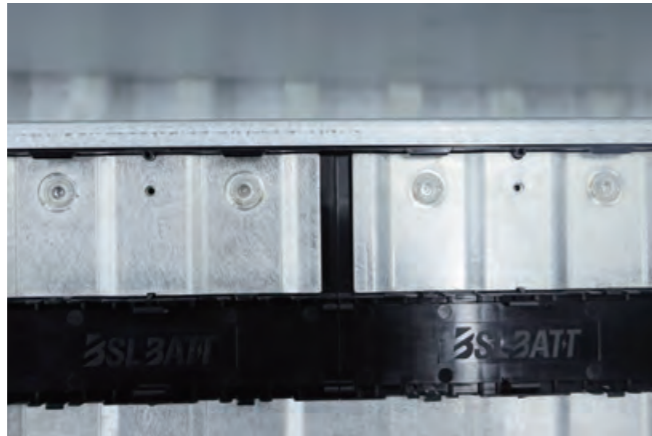
| | | | | | |
|-------------------|---------------------|----------------------------|----------------|-----------------------|------------------------------------|
| | | | | | |
| Proven Technology | High Energy Density | Quick Recharge | Extended Life | Completely Recyclable | Maintenance Free |
| | | | | | |
| Smart | Efficient | Quick Return on Investment | Extremely Safe | Drop-in Solution | High & Low Temperature Performance |

WHY BUY BSLBATT® LI-ION BATTERY?

Based on the long experience with Li-ion, BSL Battery - Industria developed a new generation of Li-ion traction batteries with 2 important advantages:

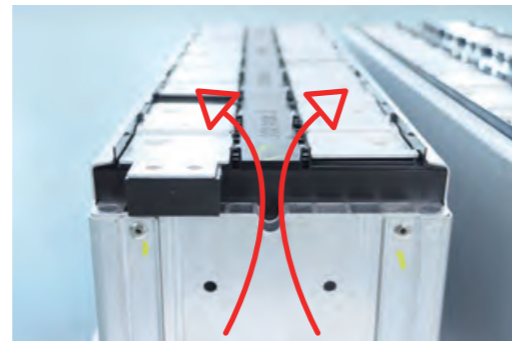
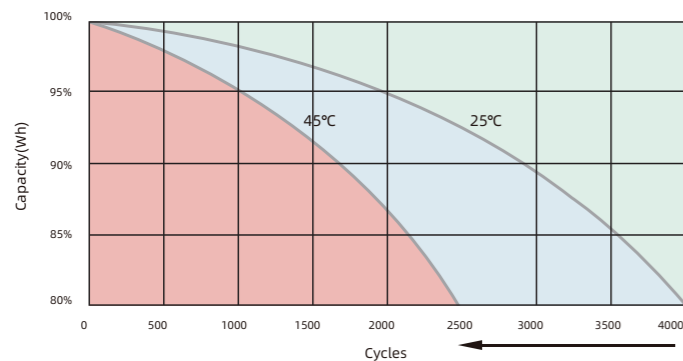
1. The BSLBATT Lithium batteries use prismatic cells based on the superior LifePO4 (Lithium Iron Phosphate) technology. This cell offers long cycle life with an excellent energy density. In industrial and logistics applications only LiFePO4 is used. It is important to understand that this technology does not ignite or explode, even if the battery breaks down.

It is fully protected The cells are assembled in modules with aserwelded bushars. This connection reduces the iteral resistance and reduces the risk of poor connections.



2. The heat dissipation in the cells has a big negative impact on the life time of the battery. Higher temperatures will reduce the lifetime drastically (each °C extra reduces the life time with 2%).

For most Li-ion batteries on the market, the cells and modules are placed together, which will lead to an unstable heat dissipation and local hotspots of the cells. The BSLBATT Lithium batteries have an optima heat balance: the modules are placed to allow an excellent natural venting. This venting will transfer the heat towards the forklift and will balance the overall temperature.



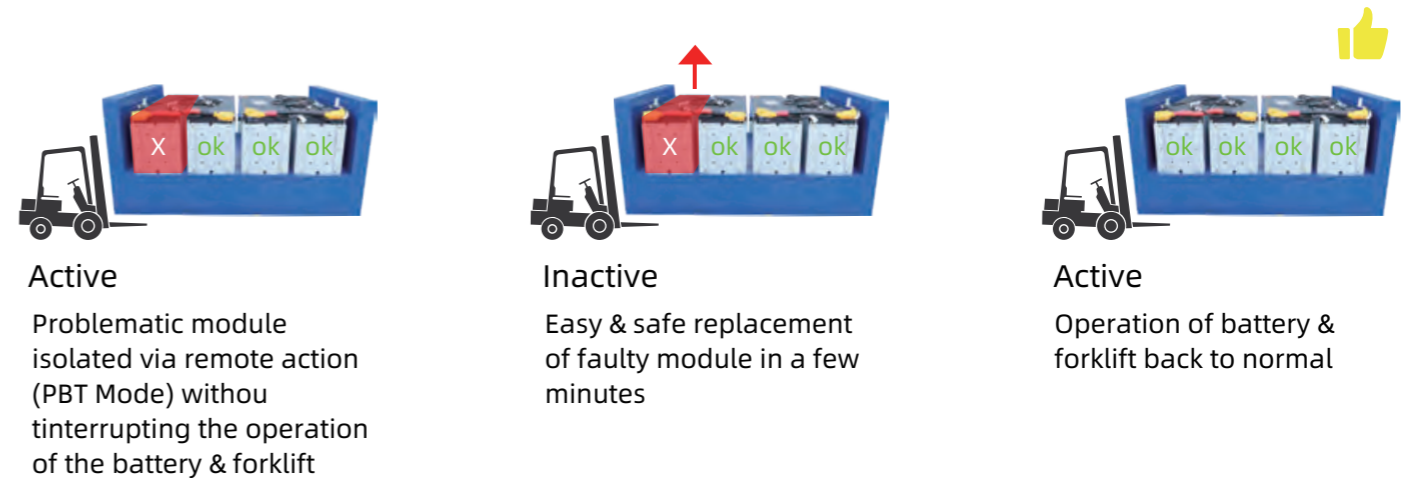
Optionally, the battery can be equipped with a compact fan for high temperature cooling or a heating system for low temperatures, while a fire extinguishing system can be added inside the battery for enhanced safety.

Ultimate Customer Experience

Fully charged in under 90 minutes, BSLBATT batteries enable 3-shift operations, without changing batteries in the middle of the workday.

Parallel Battery Topology (PBT):

In case of module malfunction, the faulty module is automatically disconnected and remains inactive via remote action, without interrupting the battery operation until the service representative arrive son-site.



BSLBATT is the first product in the market with cloud access , allowing remotely connection and bi-directionally communication via the **BSLBATT** cloud platform.

The Power Behind
The Innovation Electric Forklifts

Up to
3,500+ cycle life

Up to
10 years design life

Save up to
70% expenses in 5 years





A compact fan for cooling

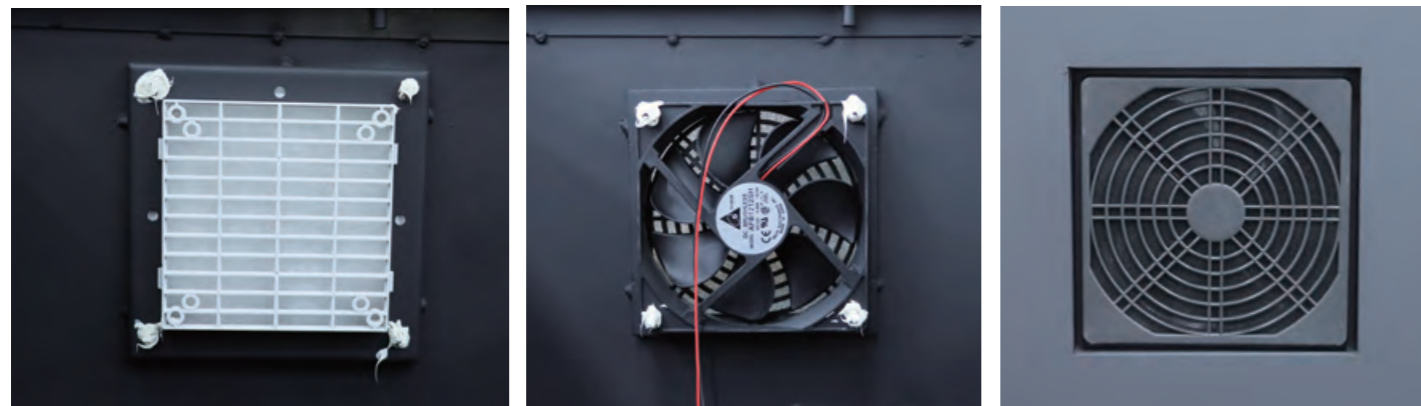


BSLBATT
Outperforms
at lower
temperatures.

Air-cooled system cools down 5°C to 10 °C

Temperature is an essential element in batteries. The technologies for this are “active heating” and “active cooling,”.

Sensors measure the temperature of many of the hundreds of cells per battery module - around 100 cells in total per battery box. If it is too hot or too cold, the battery management system sets the air conditioner or heating accordingly. The IP65-protected compact fan AFB1212SH from BSLBATT is responsible for active cooling. It extracts outside air through ducts in the battery housing, dissipates it through the metal side of the modules and cools the cells in a targeted manner. The compact fan is UL-certified, an OEM safety regulation that is required for use on the American market.



Advantages of BSL Battery

Industrial for Cold Storage Usage

1. There is no cold-temperature capacity loss with integrated battery heaters.
2. One-hour fast charging is enabled within the cold storage area (to -40 degrees).
3. Forklifts will never leave the freezer, and palletjacks can be charged in refrigerated trailers, so risks from condensation are minimized.
4. A permanently installed battery can support 24/7 continuous operation with an opportunity charging regime.
5. Maintenance is minimal, unlike lead acid batteries.
6. Cycle-life enables a useful product life of up to ten years.
7. A distribution partner with the knowledge to implement and maintain the battery systems makes execution easy and seamless.



Running time



+60%

**THE PROVEN LEADER
IN LITHIUM-ION MOTIVE POWER BATTERY**



| Model | Nominal voltage | Nominal capacity | Stored energy | Dimensions (mm) | Number of Module Methods | Standard Case Weight | Casing material | IP rating |
|-------------------|-----------------|------------------|---------------|---------------------|--------------------------|----------------------|-----------------|-----------|
| 24V system | | | | | | | | |
| B-LFP24-100MH | 25.6V | 100Ah | 2.56kWh | Support Customized | 1P*8S*1 | 42kg(88.18lbs.) | Steel | IP65 |
| B-LFP24-135MH | | 135Ah | 3.46kWh | | 1P*8S*1 | 62kg(136.69lbs.) | | |
| B-LFP24-173MH | | 173Ah | 4.43kWh | | 1P*8S*1 | 73kg(160.94lbs.) | | |
| B-LFP24-205MH | | 205Ah | 5.25kWh | | 1P*4S*2 | 80kg(176.37lbs.) | | |
| B-LFP24-230MH | | 230Ah | 5.89kWh | | 1P*8S*1 | 85kg(187.39lbs.) | | |
| B-LFP24-280MH | | 280Ah | 7.17kWh | | 1P*8S*1 | 97kg(213.85lbs.) | | |
| B-LFP24-304MH | | 304Ah | 7.78kWh | | 1P*8S*1 | 102kg(224.87lbs.) | | |
| B-LFP24-346MH | | 346Ah | 8.86kWh | | 2P*4S*2 | 119kg(262.35lbs.) | | |
| B-LFP24-410MH | | 410Ah | 10.50kWh | | 2P*4S*2 | 142kg(313.06lbs.) | | |
| B-LFP24-460MH | | 460Ah | 11.78kWh | | 2P*4S*2 | 156kg(343.92lbs.) | | |
| B-LFP24-519MH | | 519Ah | 13.29kWh | | 3P*4S*2 | 171kg(376.99lbs.) | | |
| B-LFP24-560MH | | 560Ah | 14.34kWh | | 2P*4S*2 | 181kg(399.04lbs.) | | |
| B-LFP24-608MH | | 608Ah | 15.56kWh | | 2P*4S*2 | 190kg(418.88lbs.) | | |
| B-LFP24-615MH | | 615Ah | 15.74kWh | | 3P*4S*2 | 191kg(421.08lbs.) | | |
| B-LFP24-690MH | | 690Ah | 17.66kWh | | 3P*4S*2 | 210kg(462.97lbs.) | | |
| B-LFP24-840MH | | 840Ah | 20.99kWh | | 3P*2S*4 | 244kg(537.93lbs.) | | |
| B-LFP24-920MH | 920Ah | 23.55kWh | 4P*2S*4 | 270kg(595.25lbs.) | | | | |
| B-LFP24-1120MH | 1120Ah | 28.67kWh | 4P*2S*4 | 317kg(698.87lbs.) | | | | |

| Model | Nominal voltage | Nominal capacity | Stored energy | Dimensions (mm) | Number of Module Methods | Standard Case Weight | Casing material | IP rating |
|-------------------|-----------------|------------------|---------------|--------------------|--------------------------|----------------------|-----------------|-----------|
| 36V system | | | | | | | | |
| B-LFP36-173MH | 38.4V | 173Ah | 6.64kWh | Support Customized | 1P*12S*1 | 108kg(238.10lbs.) | Steel | IP65 |
| B-LFP36-205MH | | 205Ah | 7.87kWh | | 1P*12S*1 | 122kg(268.96lbs.) | | |
| B-LFP36-230MH | | 230Ah | 8.83kWh | | 1P*12S*1 | 129kg(284.40lbs.) | | |
| B-LFP36-280MH | | 280Ah | 10.752kWh | | 1P*6S*2 | 148kg(326.28lbs.) | | |
| B-LFP36-304MH | | 304Ah | 11.67kWh | | 1P*6S*2 | 155kg(341.72lbs.) | | |
| B-LFP36-346MH | | 346Ah | 13.29kWh | | 2P*4S*2 | 171kg(376.99lbs.) | | |
| B-LFP36-410MH | | 410Ah | 15.744kWh | | 2P*4S*3 | 204kg(449.74lbs.) | | |
| B-LFP36-460MH | | 460Ah | 17.664kWh | | 2P*4S*3 | 219kg(482.81lbs.) | | |
| B-LFP36-519MH | | 519Ah | 19.93kWh | | 3P*4S*3 | 249kg(548.95lbs.) | | |
| B-LFP36-560MH | | 560Ah | 21.504kWh | | 2P*4S*3 | 261kg(575.41lbs.) | | |
| B-LFP36-615MH | | 615Ah | 23.616kWh | | 3P*4S*3 | 281kg(619.50lbs.) | | |
| B-LFP36-690MH | | 690Ah | 26.496kWh | | 3P*4S*3 | 301kg(663.59lbs.) | | |
| B-LFP36-820MH | | 820Ah | 31.488kWh | | 2P*4S*6 | 344kg(758.39lbs.) | | |
| B-LFP36-920MH | | 920Ah | 35.328kWh | | 4P*2S*6 | 403kg(888.46lbs.) | | |
| B-LFP36-1120MH | | 1120Ah | 43.01kWh | | 4P*2S*6 | 481kg(1060.42lbs.) | | |

| Model | Nominal voltage | Nominal capacity | Stored energy | Dimensions (mm) | Number of Module Methods | Standard Case Weight | Casing material | IP rating |
|-------------------|-----------------|------------------|---------------|--------------------|--------------------------|----------------------|-----------------|-----------|
| 48V system | | | | | | | | |
| B-LFP48-173MH | 51.2V | 173Ah | 8.86kWh | Support Customized | 1P*8S*2 | 125kg(275.58lbs.) | Steel | IP65 |
| B-LFP48-205MH | | 205Ah | 10.50kWh | | 1P*8S*2 | 145kg(319.67lbs.) | | |
| B-LFP48-230MH | | 230Ah | 11.78kWh | | 1P*8S*2 | 154kg(339.51lbs.) | | |
| B-LFP48-280MH | | 280Ah | 14.336kWh | | 1P*8S*2 | 179kg(394.63lbs.) | | |
| B-LFP48-304MH | | 304Ah | 15.565kWh | | 1P*8S*2 | 190kg(418.88lbs.) | | |

For more forklift lithium batteries request, please contact our sales for support .

| Model | Nominal voltage | Nominal capacity | Stored energy | Dimensions (mm) | Number of Module Methods | Standard Case Weight | Casing material | IP rating |
|-------------------|-----------------|------------------|---------------|--------------------|--------------------------|----------------------|-----------------|-----------|
| 48V system | | | | | | | | |
| B-LFP48-346MH | 51.2V | 346Ah | 17.72kWh | Support Customized | 2P*4S*4 | 361kg(795.87lbs.) | Steel | IP65 |
| B-LFP48-410MH | | 410Ah | 20.992kWh | | 2P*4S*4 | 366kg(806.89lbs.) | | |
| B-LFP48-460MH | | 460Ah | 23.552kWh | | 2P*4S*4 | 372kg(820.12lbs.) | | |
| B-LFP48-519MH | | 519Ah | 26.57kWh | | 3P*4S*4 | 306kg(674.61lbs.) | | |
| B-LFP48-560MH-A | | 560Ah | 28.672kWh | | 2P*4S*4 | 477kg(1051.60lbs.) | | |
| B-LFP48-608MH-A | | 608Ah | 31.13kWh | | 2P*4S*4 | 487kg(1073.65lbs.) | | |
| B-LFP48-560MH-B | | 560Ah | 28.672kWh | | 2P*4S*4 | 383kg(844.37lbs.) | | |
| B-LFP48-608MH-B | | 608Ah | 31.13kWh | | 2P*4S*4 | 393kg(866.42lbs.) | | |
| B-LFP48-615MH | | 615Ah | 31.488kWh | | 3P*4S*4 | 537kg(1183.88lbs.) | | |
| B-LFP48-690MH | | 690Ah | 35.328kWh | | 3P*4S*4 | 547kg(1205.93lbs.) | | |
| B-LFP48-820MH | | 820Ah | 41.984kWh | | 4P*4S*4 | 468kg(1031.76lbs.) | | |
| B-LFP48-920MH | | 920Ah | 47.104kWh | | 4P*2S*8 | 527kg(1161.84lbs.) | | |
| B-LFP48-1120MH | | 1120Ah | 57.344kWh | | 4P*2S*8 | 629kg(1386.71lbs.) | | |

| Model | Nominal voltage | Nominal capacity | Stored energy | Dimensions (mm) | Number of Module Methods | Standard Case Weight | Casing material | IP rating |
|-------------------|-----------------|------------------|---------------|--------------------|--------------------------|----------------------|-----------------|-----------|
| 72V system | | | | | | | | |
| B-LFP72-346MH | 76.8V | 346Ah | 26.572kWh | Support Customized | 2P*4S*6 | 351kg(773.82lbs.) | Steel | IP65 |
| B-LFP72-410MH | | 410Ah | 31.488kWh | | 3P*4S*6 | 417kg(919.33lbs.) | | |
| B-LFP72-460MH | | 460Ah | 35.328kWh | | 3P*4S*6 | 448kg(987.67lbs.) | | |
| B-LFP72-519MH | | 519Ah | 39.86kWh | | 3P*4S*6 | 487kg(1073.65lbs.) | | |
| B-LFP72-560MH | | 560Ah | 43.008kWh | | 2P*4S*6 | 516kg(1137.59lbs.) | | |
| B-LFP72-615MH | | 615Ah | 47.23kWh | | 3P*4S*6 | 558kg(1230.18lbs.) | | |
| B-LFP72-690MH | | 690Ah | 52.99kWh | | 3P*4S*6 | 639kg(1408.76lbs.) | | |

| Model | Nominal voltage | Nominal capacity | Stored energy | Dimensions (mm) | Number of Module Methods | Standard Case Weight | Casing material | IP rating |
|-------------------|-----------------|------------------|---------------|--------------------|--------------------------|-----------------------|-----------------|-----------|
| 80V system | | | | | | | | |
| B-LFP80-205MH | 83.2V | 205Ah | 17.06kWh | Support Customized | 1P*8S*2+1P*10S*1 | 204kg(449.74lbs.) | Steel | IP65 |
| B-LFP80-230MH | | 230Ah | 19.14kWh | | 1P*8S*2+1P*10S*1 | 220kg(485.02lbs.) | | |
| B-LFP80-280MH | | 280Ah | 23.296kWh | | 1P*4S*6+1P*2S*1 | 284kg(626.11lbs.) | | |
| B-LFP80-304MH | | 304Ah | 25.293kWh | | 1P*4S*6+1P*2S*1 | 322kg(709.89lbs.) | | |
| B-LFP80-346MH | 80V | 346Ah | 27.68kWh | Support Customized | 2P*5S*5 | 516kg(1137.59lbs.) | Steel | IP65 |
| B-LFP80-410MH | | 410Ah | 32.8kWh | | 3P*4S*6+3P*2S*1 | 528kg(1164.04lbs.) | | |
| B-LFP80-460MH | | 460Ah | 36.8kWh | | 2P*4S*6+3P*2S*1 | 538kg(1186.09lbs.) | | |
| B-LFP80-519MH | | 519Ah | 41.52kWh | | 3P*5S*5 | 512kg(1128.77lbs.) | | |
| B-LFP80-560MH | | 560Ah | 44.8kWh | | 2P*4S*6+2P*2S*1 | 650kg(1433.00lbs.) | | |
| B-LFP80-608MH | | 608Ah | 48.64kWh | | | 660kg(1455.05lbs.) | | |
| B-LFP80-615MH | | 615Ah | 51.168kWh | | 2P*4S*6+2P*2S*1 | 668kg(1472.69lbs.) | | |
| B-LFP80-690MH | | 690Ah | 57.408kWh | | 3P*2S*13 | 684kg(1507.96lbs.) | | |
| B-LFP80-820MH | 83.2V | 820Ah | 68.224kWh | Support Customized | 3P*4S*6+3P*2S*1 | 817kg(1801.18lbs.) | Steel | IP65 |
| B-LFP80-920MH | | 920Ah | 76.544kWh | | 3P*2S*13 | 948kg(2089.98lbs.) | | |
| B-LFP80-1120MH | | 1120Ah | 93.184kWh | | 4P*2S*13 | 1136kg(2504.45lbs.) | | |
| B-LFP80-1400MH | | 1380Ah | 114.82kWh | | 4P*2S*13 | 1370kg(3020.33lbs.) | | |

For more forklift lithium batteries request, please contact our sales for support .

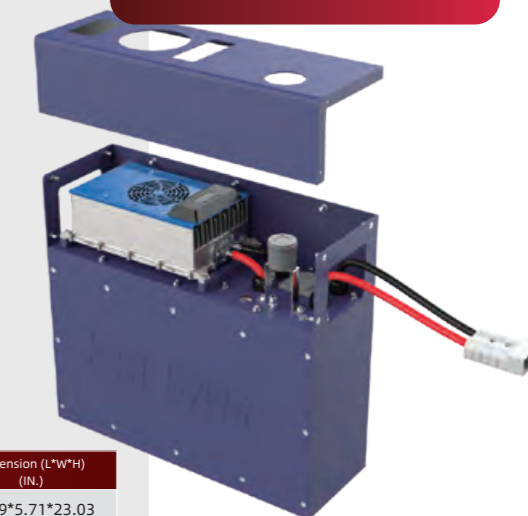


Best in class cycle life & warranty

FOR HIGH-DEMAND APPLICATIONS MADE UP ON YOUR DEMAND!

Developed and assembled by BSL Battery - Industrial

- The tray fits perfectly in the machine without need of filler material.
- Extra weight is included in the bottom of the battery tray if this is required for ballast. No need to add extra weight in the machine.
- Premium quality with high expected cycle life.
- Charging is a breeze - with the Canbus communication to charger to allow a perfect charging profile and balancing action.
- The BSLBATT Pallet Truck Batteries series comes with an amazing 5-year limited warranty.



FITS IN 100+ MODELS

| Voltage (V) | Capacity (Ah) | Continuous Discharge Current (A) | Default Charging Current (A) | Chargers (European Standard) | Weight (KG) | Dimension (L*W*H) (MM) | Dimension (L*W*H) (In.) |
|-------------|---------------|----------------------------------|------------------------------|---------------------------------|-------------|------------------------|-------------------------|
| 25.6 | 100 | 100 | 50 | 25.6V50A (Supply Voltage 220V) | 48 | 650*145*585 | 25.59*5.71*23.03 |
| 25.6 | 156 | 150 | 50 | 25.6V80A (Supply Voltage 220V) | 60 | 620*208*550 | 24.41*8.19*21.65 |
| 25.6 | 173 | 170 | 50 | 25.6V80A (Supply Voltage 220V) | 63 | 620*208*550 | 24.41*8.19*21.65 |
| 25.6 | 205 | 205 | 100 | 25.6V100A (Supply Voltage 220V) | 68 | 620*208*550 | 24.41*8.19*21.65 |
| 25.6 | 230 | 230 | 100 | 25.6V100A (Supply Voltage 220V) | 72 | 620*208*550 | 24.41*8.19*21.65 |
| 25.6 | 280 | 250 | 100 | 25.6V100A (Supply Voltage 220V) | 83 | 720*208*550 | 28.35*8.19*21.65 |
| 25.6 | 304 | 250 | 100 | 25.6V100A (Supply Voltage 220V) | 86 | 720*208*550 | 28.35*8.19*21.65 |

* American Standard charger only 24-50A

| | B-LFP48-230MH | B-LFP48-460MH | B-LFP80-420MH | B-LFP80-840MH |
|---|--------------------------------|----------------------|-------------------|-------------------|
| LENGTH | 32.09 in(815mm) | 38.9 in(988.06mm) | 41 in(104.14mm) | 48.5 in(123.19mm) |
| WIDTH | 15.98 in(406mm) | 25 in(635mm) | 27 in(68.58mm) | 20 in(50.8mm) |
| HEIGHT | 16.69 in(500mm) | 23.6 in(599.44mm) | 30 in(76.2mm) | 30.5 in(77.47mm) |
| AVAILABLE CAPACITIES | 230Ah(15.36kWH) | 460Ah(15.36kWH) | 420Ah(33,60kWH) | 840Ah(67,20kWH) |
| SYSTEM / NOMINAL VOLTAGE | 51.2V | 51.2V | 80V | 80V |
| MAX CONTINUOUS CHARGE CURRENT (EXTERNAL)* | 230A | 460A | 420A | 840A |
| CHARGE TEMPERATURE RANGE | 32°F to 131 °F (0°C to 55°C) | | | |
| DISCHARGE TEMPERATURE RANGE | -4°F to 131 °F (-20°C to 55°C) | | | |
| WEIGHT | 226.34 lbs (499kg) | 2770 lbs (1256.45kg) | 3250 lbs (1474kg) | 1173 lbs (532kg) |

THE BATTERY IS SUPPLIED WITH:

- Battery connector (to be specified)
- (external) LED screen: Voltage, Temp., RSOC, Current
- Drive protection between machine and charger
- Charger (standard not included): efficiency > 90%
- Compatible with Delta-Q chargers both for fast charging and night charging

ADVANTAGES:

- 100% Maintenance Free
- Opportunity charging = no need to have exchange battery
- Can be charged in 2 hours (with adapted charger)
- No acid or hydrogen gasses
- Expected lifetime: up to 4000 cycles

BSLBATT delivers solutions for every brand and size of vehicle, they are generally applied in these famous forklift brands:

- | | |
|-------------|--------------|
| BIG JOE | JUNGHEINRICH |
| CATERPILLAR | LINDE |
| CLARK | MITSUBISHI |
| CROWN | RAYMOND |
| DOOSAN | TCM |
| HELI | TOYOTA |
| HYSTER | UNICARRIERS |
| HYUNDAI | YALE |

| Brand | Dimension (L*W*H) (In.) | Capacity 6 Hr. Rate (KWH) |
|---------------------------|-------------------------|---------------------------|
| BARRETT | 30.56x12.75x26.25 | 13.97 |
| BIG JOE | 30.56x12.75x26.25 | 13.97 |
| BT/PRIME MOVER | 30.56x12.75x26.25 | 13.97 |
| CATERPILLAR /JUNGHEINRICH | 30.56x12.75x26.25 | 13.97 |
| CLARK | 30.56x12.75x26.25 | 13.97 |
| HYSTER | 30.56x12.75x26.25 | 13.97 |
| KOMATSU | 30.56x12.75x26.25 | 13.97 |
| LINDE/KION | 30.56x12.75x26.25 | 13.97 |
| NISSAN | 30.56x12.75x26.25 | 13.97 |
| RAYMOND | 30.56x12.75x26.25 | 13.97 |
| RICO | 30.56x12.75x26.25 | 13.97 |
| TOYOTA | 30.56x12.75x26.25 | 13.97 |
| YALE | 30.56x12.75x26.25 | 13.97 |

APPLICATIONS



Pallet Truck

*For more lithium batteries request, please contact our sales for support .

Lithium battery alternatives for Compact Multi-Directional Forklifts switching from lead-acid batteries.

| Product Model | Forklift brand | Forklift model | Nominal voltage(V) | Lithium battery capacity(Ah) | Forklift battery compartment(mm) | Forklift battery compartment(inches) | Forklift battery weight range(kg) | Forklift battery weight range(lb.) |
|---------------|----------------------------|----------------|--------------------|------------------------------|----------------------------------|---|-----------------------------------|------------------------------------|
| B-LFP24-300MH | Multi-Directional Forklift | | 25.6 | 300 | 412*220*702+ 412*220*702 | 16.22*8.66*27.64+ 16.22*8.66*27.64 | 335+335 | 738.55+738.55 |
| B-LFP24-300MH | Multi-Directional Forklift | | 25.6 | 300 | 814*228*652 | 32.05*8.98*25.67 | 320 | 705.48 |
| B-LFP48-820MH | Multi-Directional Forklift | | 48 | 820 | 620*506*830+ 768*506*830 | 24.41*19.92*32.68+ 30.24*19.92*32.68 | 630+800 | 1388.91+1763.70 |
| B-LFP48-840MH | Multi-Directional Forklift | | 51.2 | 840 | 768*506*775+ 619*506*775 | 30.24*19.92*30.51+ 24.37*19.92*30.51 | 870+700 | 1918.02+1543.24 |
| B-LFP48-840MH | Multi-Directional Forklift | | 51.2 | 840 | 842*744*772 | 33.15*29.29*30.39 | 1355 | 2987.26 |
| B-LFP72-410MH | Multi-Directional Forklift | | 72 | 410 | 961*614*785 | 37.83*24.17*30.91 | 1288 | 2839.55 |
| B-LFP72-690MH | Multi-Directional Forklift | | 76.8 | 690 | 705*518*775+ 903*617*775 | 27.76*20.39*30.51+ 35.55*24.29*30.51 | 1008+726 | 2222.26+1600.56 |
| B-LFP80-560MH | Multi-Directional Forklift | | 83.2 | 560 | 913*847*1018+ 319*467*705 | 35.94*33.35*40.08+ 12.56*18.39*27.76 | 1190+370 | 2623.50+815.71 |
| B-LFP48-460MH | Hubtex | MQ30 | 51.2 | 460 | 800*500*790 | 31.50*19.68*31.10 | 950 | 2094.39 |
| B-LFP48-560MH | Hubtex | MQ30 | 51.2 | 560 | 800*500*790 | 31.50*19.68*31.10 | 950 | 2094.39 |

*For more lithium batteries request, please contact our sales for support .

Lithium battery alternatives for heavy-duty forklifts switching from lead-acid batteries.

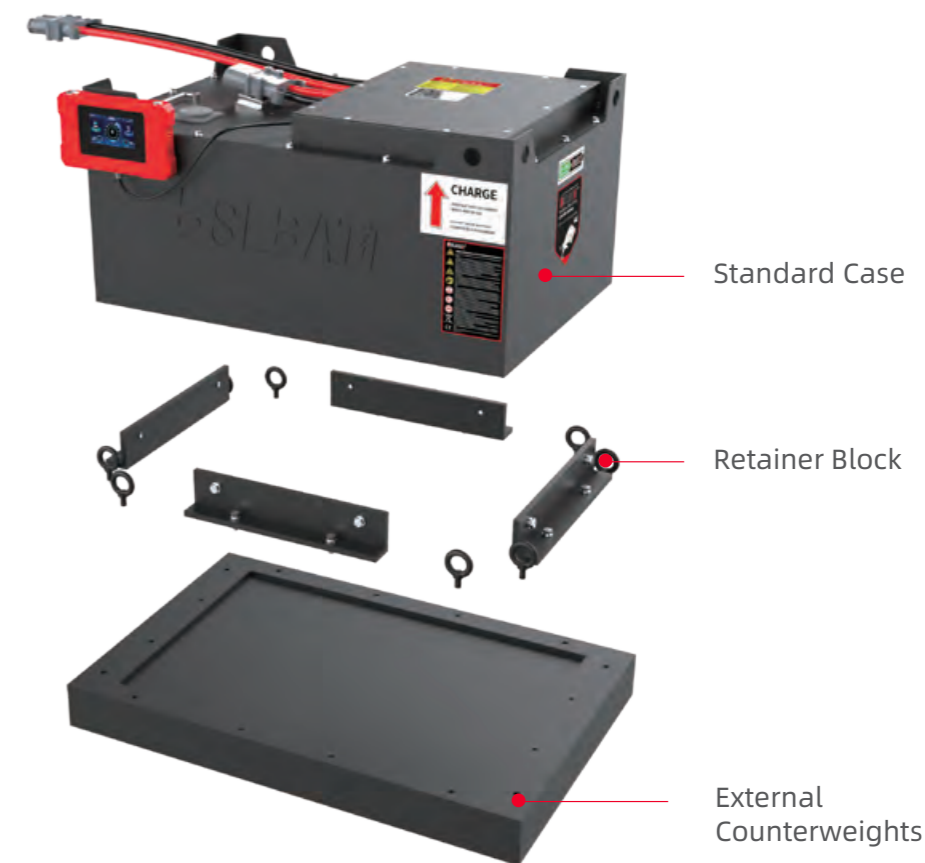
| Product Model | Forklift brand | Forklift model | Nominal voltage(V) | Lithium battery capacity(Ah) | Forklift battery compartment(mm) | Forklift battery compartment(inches) | Forklift battery weight range(kg) | Forklift battery weight range(lb.) |
|----------------|----------------|----------------|--------------------|------------------------------|----------------------------------|--------------------------------------|-----------------------------------|------------------------------------|
| B-LFP80-920MH | YALE | YALE ERP50VMG | 83.2 | 920 | 1024*995*777 | 40.31*39.17*30.59 | 2280 | 5026.54 |
| B-LFP80-560MH | YALE | YALE ERP45VM | 83.2 | 560 | 1024*995*777 | 40.31*39.17*30.59 | 2280 | 5026.54 |
| B-LFP80-820MH | YALE | YALE ERP50VM | 83.2 | 820 | 1024*995*777 | 40.31*39.17*30.59 | 2280 | 5026.54 |
| B-LFP80-1380MH | YALE | YALE ERP50VM | 83.2 | 1380 | 1024*995*777 | 40.31*39.17*30.59 | 2250 | 4960.40 |
| B-LFP80-920MH | RANIERO | RANIERO | 83.2 | 920 | 1100*830*680 | 43.31*32.68*26.77 | 990 | 2182.58 |
| B-LFP80-1120MH | HYSTER | HYSTER M0064 | 38.4 | 1120 | 790*580*760 | 31.10*22.83*29.92 | 1350 | 2976.24 |
| B-LFP96-1200MH | RANIERO | RANIERO | 96 | 1200 | 1430*1380*627 | 56.30*54.33*24.69 | 1292 | 2848.37 |
| B-LFP96-1200MH | CARERZ | CARERZ 70 H2 | 96 | 1200 | 1310*1310*708 | 51.57*51.57*27.87 | 2710 | 5974.53 |

*For more lithium batteries request, please contact our sales for support .



① Black box technology with counterweight placed at the bottom

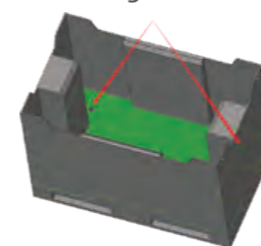
Your next truck might have a different compartment? Simply update your weight module to fit the new dimensions, weight and most optimized charge socket location.



Standard options

Relay remote solution, magnetic touch screen, charging and discharging interface, discharging Anderson 350, charging REMA320, charging relay 300A, discharging relay 600A.

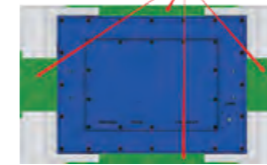
Distribution Box And Drainage Hole



Standard Box Weight Box



Clump Weight



② A counterweight technology is placed around the black box

Your next truck might have a different compartment? Simply update your weight module to fit the new dimensions, weight and most optimized charge socket location.



On track for success with BSLBATT



BSLBATT GPRS + GPS Cloud Services

BSLBATT's forklift lithium batteries use LiFePO4 cells. Our cell has a cycle life of 3500-4500 times. In addition, some of our cells have a cycle life of more than 6000 times.

Long Life Span, high To 6000 Times

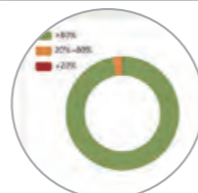


Discharge Capacity $\geq 100\%$ *nominal

Battery capacity is one of the important performance indicators to measure battery performance. The actual capacity of our battery under certain conditions (discharge rate, temperature, termination voltage, etc.) $\geq 100\%$ *Nominal

Our A cell is a cell that has no abnormality within the range of technical parameters that meet the national standard or above in all aspects.

Brand New Class A Cells

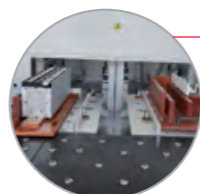


Remote Intelligent BMS

high-performance 32-bit processor and high-precision front-end sampling chip, multiple hard core technologies improve cell consistency management and estimation accuracy.

Our BMS provides remote real-time online monitoring of batteries.

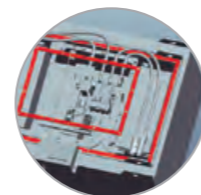
We use high-quality aluminum bus bar, use laser welding to seamlessly and perfectly weld the aluminum bus bar and the lug of the cell. As well as the use of aluminum alloy and steel frames, which greatly improves the strength and stiffness of the battery pack.



Reliable Module Welding

Therefore, our modules are more able to withstand the harsh working environment, charge and discharge expansion.

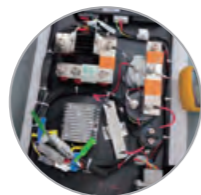
Our battery uses a waterproof sealing ring that prevents moisture from passing through.



Waterproof Structure

Battery case is a battery pack that is effectively protected and can prevent potentially harmful substances from damaging the battery.

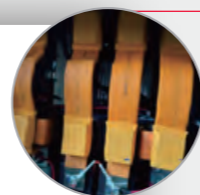
PDU integrates BMS main control, charging module, DC module, etc. our PDU has more vehicle functional modules, which are more integrated in function and more mature in structure.



Integrated PDU

The PDU configuration is flexible, and we can customize and develop it according to customer requirements, which can meet the needs of different customers and models.

Flexible Copper Busbar



Our Bus bars are customized based on different configurations, it is flexible to operate, reliable and the lowest cost.



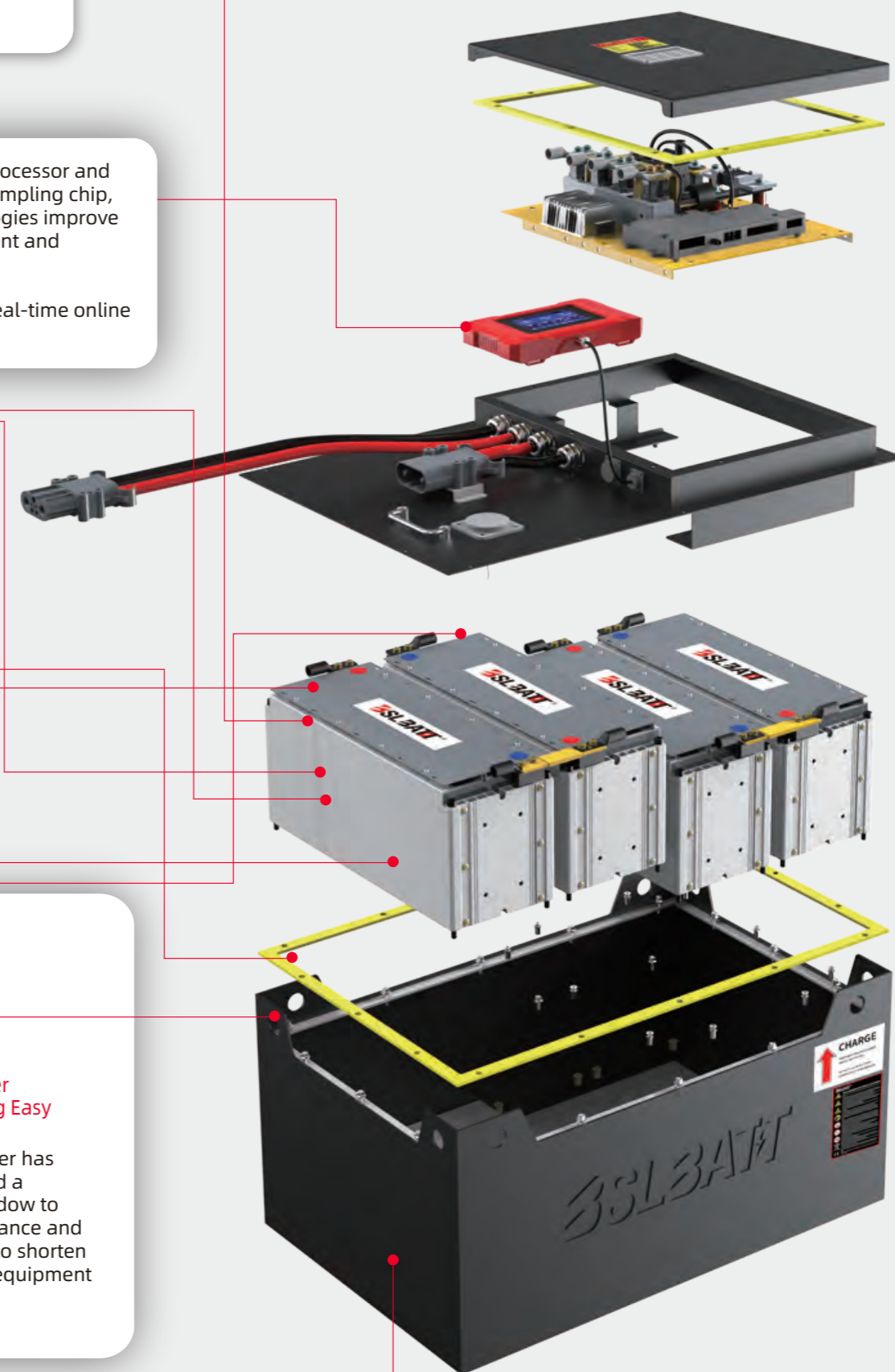
Maintenance Cover Makes Maintaining Easy

Battery upper cover has specially designed a maintenance window to facilitate maintenance and inspection, so as to shorten the downtime of equipment maintenance.

Safety is the magic weapon to ensure the smooth completion of our career, and safety is vital to us. The battery is fully insulated and protected, and flame retardant materials are used.

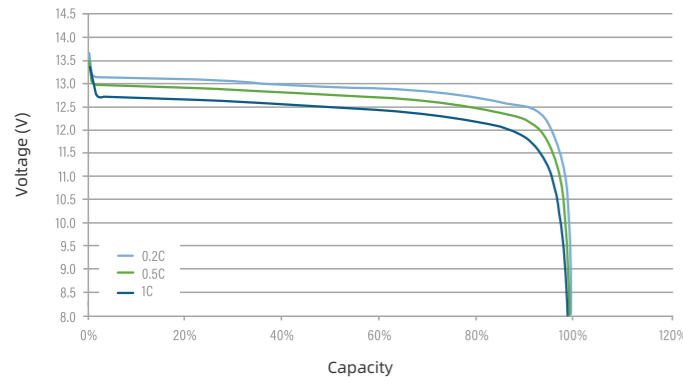


Safety Material Insulated and protected with flame retardant materials

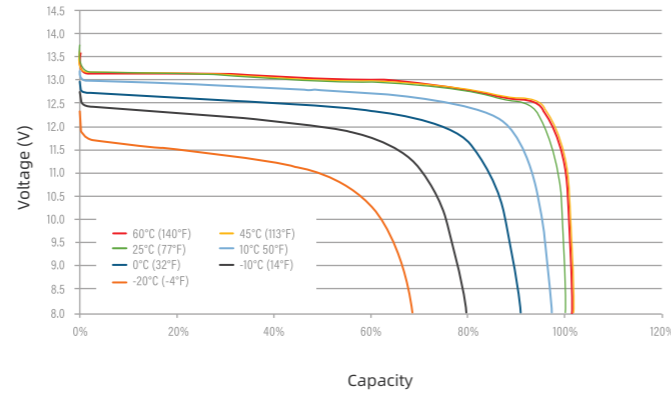


TYPICAL LITHIUM IRON PHOSPHATE CHARACTERISTICS

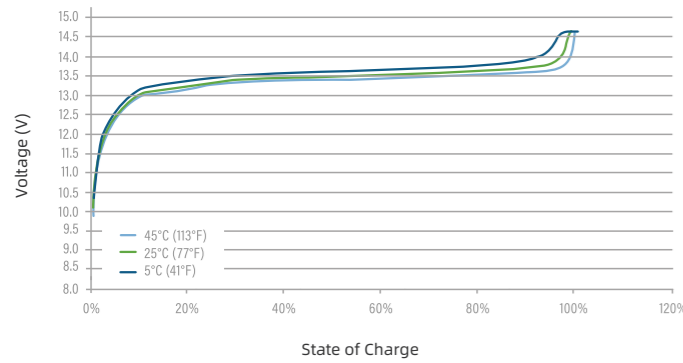
DISCHARGE VOLTAGE CHARACTERISTICS at VARIOUS RATES 25°C (77°F)



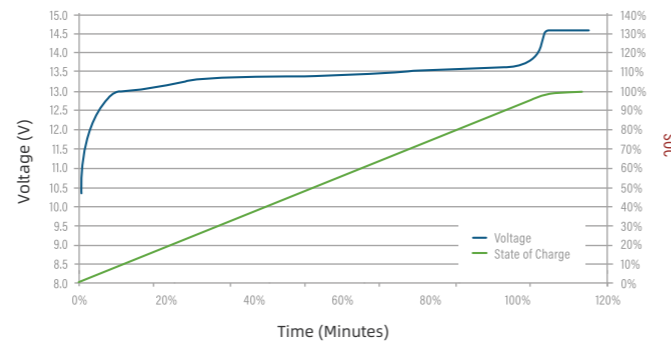
DISCHARGE VOLTAGE CHARACTERISTICS AT VARIOUS TEMPERATURES DISCHARGE 1C



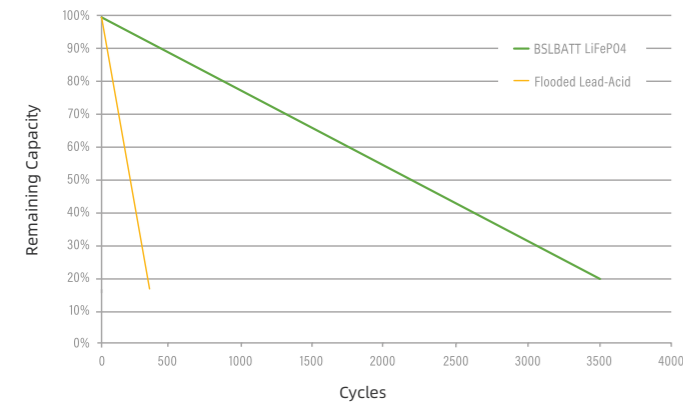
CHARGE VOLTAGE CHARACTERISTICS AT VARIOUS RATES CHARGE 0.2C



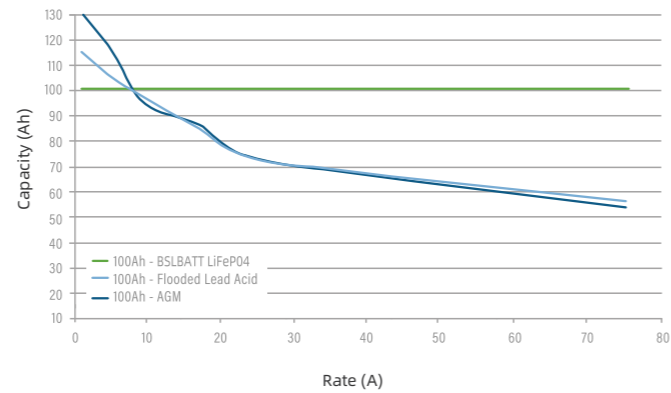
CHARGE VOLTAGE AND STATE OF CHARGE (SOC) CHARGE 0.2C @ 25°C (77°F)



CYCLE LIFE VS. DEPTH OF DISCHARGE (DOD) AT 80% DISCHARGE 0.5C / CHARGE 0.5C @ 25°C (77°F)



CAPACITY OF BSLBATT LiFePO4 VS. LEAD ACID at VARIOUS RATES OF DISCHARGE



*Performance between applications and batteries may vary. All results should be independently verified by customer.

Superior Power & Optimal Performance

The latest 4.3 inch magnetic screen



Battery Management System (BMS)

The built-in BMS is equipped with automotive-grade components assuring safety, top quality and high energy density to provide a fully optimized solution for demanding industrial applications.

BMS software ensures the battery provides peak performance when in operation, delivers longer run time between charges, maximizes the total battery lifespan and to communicate well between the charger, battery and users.



The BMS can offer:

All-time Cell Balancing and Battery Management.

Through intelligent balancing strategy, the BMS can always maintain the consistency of the cells and realize the balance between individual cells.

Battery Real-time Monitoring and Communication Through CAN.

Monitoring cell voltage, electric current and battery temperature so that any movement outside the normal range disconnects the cell or the entire battery.

Fault Alarm and Safety Protection.

When the battery is less than 10%, it will beep to prompt for charging, over/under voltage, low/over temperature, over current or other faults will prompt to make the battery safe. Safety always comes first.

CLOUD-BASED TELEMATICS AND ASSET MANAGEMENT

Keep your fleets running around the clock with intelligent fleet management

Track usage patterns and diagnose issues remotely for real-time monitoring, maximum efficiency and operator safety —BSL BMS will notify you before an issue occurs. View battery performance and data, monitor fleet activity, and generate real-time metrics from the web portal.



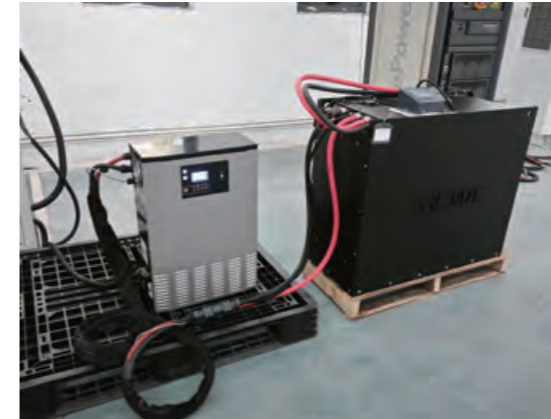
WORKFLOW

BENEFITS

- View/share real-time data
- Diagnose issues remotely
- Manage maintenance costs
- Impact energy usage and savings
- Optimize operator safety
- Improve productivity
- Eliminate unplanned downtime
- Avoid unexpected breakdowns
- Monitor equipment allocation
- Real-time alerts
- Optional GPS tracking capability

ADVANTAGES

- Real-time fleet monitoring
- Performance metrics and data reports
- Generate custom alerts to notify multiple users
- Aggregate data to identify over/under utilized batteries
- Optimize operator practices
- Password-protected account
- Custom user permissions and functionality
- Saves 1 month of full debug data locally
- Wi-Fi/Cellular/Bluetooth compatibility



BSLBATT AND SPE CHARGER

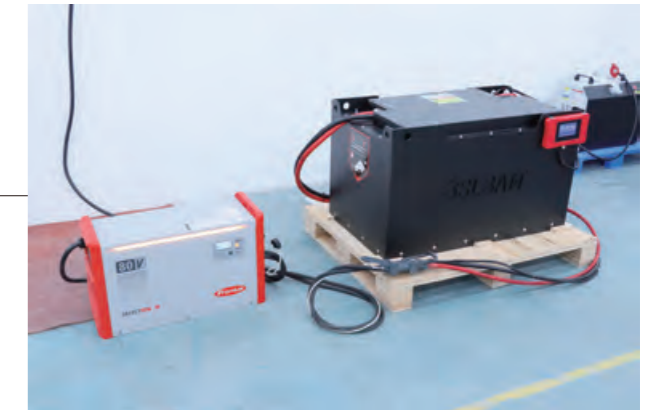


BSL Forklift Lithium Batteries join the SPE Industrial Electronics Charger Manufacturer's Compatibility Program.



BSLBATT AND FRONIUS CHARGER

BSLBATT Battery announced that it has joined Fronius Perfect Charging's new partner program "Charger Compatibility".



BSLBATT IS PART OF THE CHARGED BY DELTA-Q PROGRAM



BSLBATT Batteries announces a new partnership with Delta-Q Technologies, a Tier 1 OEM charger manufacturer.



24V/48V/80V/Wall Mounted/EV Charger

This series of chargers have their own wheels, which are easy to move and install. They can also be designed in other fixed ways according to customer requirements.



24V Series

| Charger model | Rate input voltage | Output voltage range(V) | Rate output current(A) |
|---------------|---------------------------------|-------------------------|------------------------|
| BSL24V-50A | 220VAC Single phase | 16-32 VDC | 50 |
| BSL24V-100A | | 16-32 VDC | 100 |
| BSL48V-50A | | 18-60 VDC | 50 |
| BSL48V-100A | | 18-60 VDC | 100 |
| BSL24V-150A | 380VAC Three phase five-wire | 16-32 VDC | 150 |
| BSL24V-200A | | 16-32 VDC | 200 |
| BSL48V-100A | | 18-60 VDC | 100 |

** We don't list all our charger here, please contact our sales for other charger model

48V/80V/150V Series

| Charger model | Rate input voltage | Output voltage range(V) | Rate output current(A) |
|---------------|---------------------------------|-------------------------|------------------------|
| BSL48V-100A | 380VAC Three phase five-wire | 20-65 VDC | 100 |
| BSL48V-150A | | 20-65 VDC | 150 |
| BSL48V-200A | | 20-65 VDC | 200 |
| BSL48V-250A | | 20-65 VDC | 250 |
| BSL48V-300A | | 20-65 VDC | 300 |
| BSL80V-100A | 380VAC Three phase five-wire | 30-100 VDC | 100 |
| BSL80V-150A | | 30-100 VDC | 150 |
| BSL80V-200A | | 30-100 VDC | 200 |
| BSL80V-250A | | 30-100 VDC | 250 |
| BSL80V-300A | | 30-100 VDC | 300 |
| BSL150V-100A | 380VAC Three phase five-wire | 60-200 VDC | 100 |
| BSL150V-200A | | 60-200 VDC | 200 |

** We don't list all our charger here, please contact our sales for other charger model

48V/80V/150V Series

| Charger model | Rate input voltage | Output voltage range(V) | Rate output current(A) |
|-------------------|---------------------------------|-------------------------|------------------------|
| BSL48V-200A-480UL | 400V Three phase five-wire | 30-65 VDC | 200 |
| BSL80V-200A-480UL | | 30-100 VDC | 200 |
| BSL48V-200A-220UL | 220VAC Three phase five-wire | 30-58 VDC | 200 |
| BSL80V-200A-220UL | | 30-100 VDC | 200 |

** We don't list all our charger here, please contact our sales for other charger model



Excellent electrical properties

Adopts PFC+LLC soft switching technology, high input power factor, low current harmonics, small voltage and current ripple, high conversion efficiency and module power with high density.

User-friendly and convenient UI interface

The ergonomic appearance design is equipped with a user-friendly and convenient UI interface. The charging information status display, charging operation and setting functions are realized through the LCD touch screen + LED + button man-machine interface.

Wide input voltage range

Input voltage is AC90V~ 265V, which can provide battery with stable and reliable temperature control function during charging under the unstable power supply environment of the battery.

With Capacity expansion and parallel redundant operation

In the demand of capacity expansion, we can adopt the capacity expansion schemes such as "Dual charger charging single Forkli", "Single charger with dual guns charging single Forkli", "Single charger with dual guns charging dual Forkli independently".

Wide Output voltage range

It can adapt to the special number of cells connected in series, and also adapt to special emergency situations, 48V charger suitable for 24V lithium batteries.

Complete protection and self diagnosis functions

The product has the functions of overcharge protection, overvoltage protection, overcurrent protection, overtemperature protection, overtemperature protection for connector, input phase loss, input high and low voltage protection, leakage protection abnormal protection, etc, and realizes self-diagnosis and faults Display.

Fast and safe and smart charging

With lithium battery BMS CAN communication, to realize intelligent management of battery charging and fast charging and long lithium battery life through BMS to ensure lithium battery with fast stable and safe.

Modular design

Adopts design of hot-swappable modular installation, simplifies the maintenance and replacement of product components, reduces the technical requirements for users, reduces average maintenance time

